



MARINE ASSET PROFILE

Think Better · Do Better · Be Better

Owner & Operator of Marine & Offshore Support Vessels

- Provision of Offshore Towing & Transportation
- Provision of Crane Barge & Heavy-Lift Equipment
- Emergency Salvage & Pollution Response
- Port & Marine Civil Engineering Infrastructure Projects

☎ 65 6777 9990 📠 +65 6778 9990

✉ enquiry@kimheng.com.sg 🌐 www.kimheng.com.sg

Yard: 9 Pandan Crescent Singapore 128465

Office: 48 Penjuru Road Singapore 609152



No	NAME	TYPE	Power (BHP)	DIMENSION	GRT / NRT	CLASS	YEAR BUILT	FLAG	HC LICENSE
1	KIM HENG 3203	TOWING TUG	3200	32.0M X 9.76M X 4.30M	365 / 109	B.V.	2009-04	SGP	
2	KIM HENG 1630	TOWING TUG	1630	26.0M x 8.0M x 3.65M	196 / 59	RINA	2013-10	SGP	
3	KIM HENG 1300	TOWING TUG	1300	23.5M x 7.32M x 3.2M	148 / 45	N.K	2012-05	SGP	ST 1448C
4	KIM HENG 1301	TOWING TUG	1300	23.5M x 7.32M x 3.5M	155 / 47	N.K	2014-04	SGP	ST 1597H
5	KIM HENG 1302	TOWING TUG	1300	23.5M x 7.32M x 3.2M	141 / 43	N.K	2012-12	KIRIBATI	ST 1453Z
6	KIM HENG 68	SHALLOW WATER FAST RESPONSE CRAFT	760	15.5M X 4.5M X 1.9M	32 / 9	B.V.	2016-10	SGP	SC 4813I
7	ZALE 8	SHALLOW WATER FAST RESPONSE CRAFT	420	8.0M x 3.5M x 1.4M	10 / 2	-	2017	SGP	SR 3702H
8	ZALE RESPONDER	SHALLOW WATER FAST RESPONSE CRAFT	160	6.6m x 2.3 M x 1.18 M	8 / 2	-	2017	SGP	SR 3769I

No	BARGE NAME	TYPE	DIMENSION			GRT / NRT	DWT (MT)	Class	Year Built	Flag	HC License
			(Feet/Meter)								
			Length	Breadth	Depth						
1	KIM HENG 331	Cargo Deck Barge	330 / 100.58	100 / 30.48	20 / 6.1	New Con 2025	11610	RINA	2025	SGP	New Con 2025
2	KIM HENG 332	Cargo Deck Barge	330 / 100.58	100 / 30.48	20 / 6.1	New Con 2025	11610	RINA	2025	SGP	New Con 2025
3	KIM HENG 253	Cargo Deck Barge	250 / 73.15	80 / 24.38	16 / 4.88	2306 / 692	5286	RINA	2006	SGP	SC5030C
4	KIM HENG 280	Crawler Crane Work barge	280 / 85.34	80 / 24.38	16 / 4.88	2620 / 786	5866	RINA	2006	Nieu	SC4689F
5	KIM HENG 250	Cargo Deck Barge	250 / 76.2	70 / 21.34	14 / 4.27	1759 / 527	3958	RINA	2018	SGP	SC 5161Z
6	KIM HENG 2370	Cargo Deck Barge	230 / 67.36	64 / 19.51	15 / 4.72	1678 / 503	4195	ABS	2014	SGP	SC4672A
7	KIM HENG 2378	Cargo Deck Barge	230 / 67.33	64 / 19.52	14 / 4.22	1472 / 441	3491	ABS	2012	SGP	SC4586E
8	KIM HENG 212	Cargo Deck Barge c/w Spud	210 / 64.05	60 / 18.3	12 / 3.66	1059 / 317	2453	ABS	2013	SGP	SC4579B
9	KIM HENG 1881	Crane Barge c/w Spud	180 / 54.86	80 / 24.38	12 / 3.66	1255 / 376	2568	RINA	2023	SGP	SR 4089 D
10	OFFSHORE CRANE NO.2	Crane Barge c/w Spud	180 / 52.67	70 / 21.34	14 / 4.27	1260 / 378	3153	G.L.	2008	SGP	SR2763D
11	KIM HENG 1888	Cargo Deck Barge c/w Spud	180 / 52.67	50 / 15.24	10 / 3.05	629 / 188	1477	-	2009	-	SR3045G
12	KIM HENG 1868	Cargo Deck Barge	180 / 52.67	60 / 18.29	12 / 3.66	928 / 278	2234	ABS	2014	SGP	SC4737Z
13	KIM HENG 1882	Cargo Deck Barge	180 / 52.69	80 / 24.38	12 / 3.65	1255 / 376	2568	RINA	2023	SGP	SC 5113Z
14	KIM HENG 1668	Crane Barge	160 / 48.8	60 / 18.29	12 / 3.66	814 / 244	1948	G.L.	2015	SGP	SR3743E
15	KIM HENG 121	Cargo Deck Barge	120 / 36.58	40 / 12.19	8 / 2.44	269 / 80	632	ABS	2023	SGP	SC 5112A
16	KIM HENG 127	Cargo Deck Barge c/w Spud	120 / 35.11	40 / 12.19	8 / 2.44	268 / 81	650	G.L.	2013	SGP	SR3749D
17	KIM HENG 122	Cargo Deck Barge	120 / 35.11	40 / 12.19	8 / 2.44	268 / 80	632	ABS	2023	SGP	SC 5129F
18	KIM HENG 100	Platform Barge	100 / 30.48	30 / 9.14	8 / 2.44	159 / 48	400	RINA	2014	SGP	SC4678J
19	KIM HENG 84	Platform Barge	80 / 24.38	25 / 7.62	8 / 2.44	114 / 35	203	G.L.	2013	SGP	SR3314F
20	KIM HENG 86	Platform Barge c/w Spud	80 / 24.38	25 / 7.62	8 / 2.44	114 / 35	203	RINA	2013	SGP	SC4629B
21	KIM HENG 87	Platform Barge c/w Spud	80 / 24.38	25 / 7.62	8 / 2.44	114 / 35	202	RINA	2013	SGP	SC4630F



3,200BHP 40TBP 32M Ocean Towing Tug

MAIN PARTICULARS

Vessel Name	Kim Heng 3203
IMO No.	9 5 3 7 8 0 0
Year Built	2 0 0 9
Port of Registry	SINGAPORE
Call Sign	9 V 7 4 3 8
Official No.	3 9 4 1 6 0
MMSI (DSC/EPIRB)	5 6 3 2 1 8 0 0 0
GRT / NRT	365 / 109
Class/Notation	BUREAU VERITAS
BV Reg No.	1 3 4 5 9 G

DIMENSIONS

Length - OA	32 M
Length - BP	29.66 M
Beam Moulded	9.76 M
Depth Moulded	4.3 M
Draft Moulded	3.50 M
Deadweight	264.56 Tonnes
Clear Deck Area	80 M2

COMMUNICATION EQUIPMENT

MF/HF / GMDSS	1 x Furuno FS-2570C
LRIT IMMARSAT	LRIT Furuno FELCOM15 IMMARSAT C: 456321810
NAVTEX / EPIRB	1 x Furuno NX700 / EPIRB Saracom EB10
AIS / SART	GME MT403FF / 2 X transponder TBR 600A
VHF DSC	Furuno FM8800 / SARACOM TW50
P A System	1 x PA System
Sat Broadband	Sailor FBB-150 Fleet Broadband

NAVIGATION EQUIPMENT

Marine Radar	1 x Kodon MRD-96
Auto Pilot / Gyro Compass	1 x Auto Pilot Gyro compass 1 x Magnetic Compass CGY-165
GPS / Speed Log	Furuno GP-150 GPS / 1x Furuno DS-80 Speed Log
Echo Sounder	1 x Echo Sounder

CAPACITY

Cruise Speed	5.5 Knots approx.
Fuel Oil Capacity	288 M3 (100%Full)
Consumption/24hr	10.5 M3 (85%MCR)
Consumption/24hr	8.5 M3 (65%MCR)
Designed Speed	12.5 knots (100mcr)
Bollard Pull	40 Ton (442 kN)
Endurance	30 days (Estimate)
Fresh Water	44 m3 (100% Full)
Ballast Tank	40 m3 (100% Full)

DECK EQUIPMENT

Towing Winch	80 tonnes static pull Waterfall Double Drum towing winch.
Main Tow Wire	700M x 42 mm dia Wire Rope 6 x 36 SW + 1 WR
2nd Tow Wire	500M x 42 mm dia Wire Rope (Breaking load: 1638 KN)
SOLAS Life Save Apparatus	Ship registry and IMO & Class certified
Accommodation	TOTAL 15 Berth

MAIN MACHINERY

Main Propulsion	2 x Cummins KTA50M2 1600hp (1193kw) @1800 RPM
Main Generator	2 x Cummins 6BT5.9-GM100 97 HP C/W 100 KVA (78kw) Stanford MP-H-80-4 Generator 415V/3P /50Hz
Oily Water separator	Wuhan Zhongzhou CL-0.5-00 0.5m3/h MEPC 107(49)
Sewage System	1 x WCBL2-H, WCH-0.5 m3 Cap
Water maker	1 unit



1,630BHP 20TBP 26M Coastal Towing Tug

MAIN PARTICULARS

Vessel Name	Kim Heng 1630
I M O No.	9 6 9 7 6 9 8
Year Built	2013
Port of Registry	SINGAPORE
Call Sign	9 V 2 3 6 1
MMSI (DSC/EPIRB)	5 6 3 0 2 6 3 1 0
GRT / NRT	1 9 6 / 5 9
Class/Notation	RINA
RINA No.	99307
Harbour Craft	S T

DIMENSIONS

Length - OA	26 M
Length - BP	24.34 M
Beam Moulded	8.0 M
Depth Moulded	3.65 M
Draft Moulded	3.0 M
Deadweight	166 Tonnes
Clear Deck Area	60 M2

COMMUNICATION EQUIPMENT

MF/HF / GMDSS/ LRIT IMMARSAT	FURUNO FS-1503 SSB GMDSS A1 - A3
NAVTEX / EPIRB	SAMYUNG SNX-300 / KANNAD-406 EPIRB
AIS / SART	SAMYUNG 50N AIS / KANNAD SART
VHF DSC	SAMYUNG STR-6000A VHF-FM Transceiver SAMYUNG STV-160 MARINE VHF-FM - 2 SET
P A System	1 x PA System / Samyung BNW-50 BNWAS -Bridge Nav Watch alarm
Sat Broadband	Sailor FBB-150 Fleet Broadband

NAVIGATION EQUIPMENT

Auto Pilot / Gyro Compass	1 x Auto Pilot Gyro compass 1 x Magnetic Compass CGY-165
GPS / Speed Log	Furuno GP-32 GPS
Echo Sounder	FURUNO FCV-627 Echo Sounder

CAPACITY

Cruise Speed	8 Knots approx.
Fuel Oil Capacity	130 M3 (100%Full)
Consumption/24hr	8.0 M3 (100%MCR)
Consumption/24hr	5.5 M3 (75 %MCR)
Designed Speed	10.0 knots (100mcr)
Bollard Pull	20 Tonnes
Endurance	21 days (Estimate)
Fresh Water	45 m3 (100% Full)
Ballast Tank	54 m3 (100% Full)

DECK EQUIPMENT

TOW Equipment	1 X TH-30T SWL TOWING HOOK
FIRE Fighting Equipment	1 X GS Fire Pump 25m3/hr @22M Head approx. 1 X emergency Fire pump 25M3/HR @ 22M Head 1 x Fixed CO 2 System
SOLAS Life Save Apparatus	Ship registry and IMO & Class certified
Accommodation	TOTAL 12 Berth

MAIN MACHINERY

Main Propulsion	2 x YANMAR 6AYM-WET Diesel Engine 829BHP (610KW) @ 1900 RPM
Main Generator	2 x 48KW YANMAR 4TNV106T-GGE2
Oily Water separator	Model CYF0.25Y Cap. 0.25M3/Hr
Sewage System	1 .620 M3 Capacity



1,300BHP 16TBP 23M Shallow Water Towing Tug

MAIN PARTICULARS

Vessel Name	Kim Heng 1300
I M O No.	9 6 3 3 7 6 9
Year Built	2012
Port of Registry	SINGAPORE
Call Sign	9V 1255 (S6NO2)
Official No.	3 9 7 8 7 8
MMSI (DSC/EPIRB)	5 6 3 0 2 1 2 8 0
GRT / NRT	148 / 45
Class/Notation	NK (TUG) NS*MNS*
Harbour Craft	ST 1 4 4 8 C

DIMENSIONS

Length - OA	23.5 M
Length - BP	21.322 M
Beam Moulded	7.32 M
Depth Moulded	3.2 M
Draft Moulded	2.70 M
Deadweight	114 Tonnes
Clear Deck Area	25 M2

COMMUNICATION EQUIPMENT

MF/HF / GMDSS/ LRIT IMMARSAT	1 x Furuno FS-1570C GMDSS A1 – A3
NAVTEX / EPIRB	1 x Furuno NX700 / 1 X SAMYUNG EPIRB
AIS / SART	1 x SART
VHF DSC	2 X VHF ICOM VHF-FM Transceiver
P A System	1 x PA System
Sat Broadband	Sailor FBB-150 Fleet Broadband

NAVIGATION EQUIPMENT

Marine Radar	1 x Furuno 1715 24NM RADAR
Auto Pilot / Gyro Compass	1 x Auto Pilot Gyro compass 1 x Magnetic Compass CGY-165
GPS / Speed Log	Furuno GP-150 GPS / 1x Furuno DS-80 Speed Log
Echo Sounder	1 x Echo Sounder

CAPACITY

Cruise Speed	8 Knots approx.
Fuel Oil Capacity	89 M3 (100%Full)
Consumption/24hr	4.5 M3 (85%MCR)
Consumption/24hr	4.0 M3 (75%MCR)
Designed Speed	10.0 knots (100mcr)
Bollard Pull	15.82 Tonnes
Endurance	21 days (Estimate)
Fresh Water	26 m3 (100% Full)
Ballast Tank	32 m3 (100% Full)

DECK EQUIPMENT

Tow Equipment	1 X 25T SWL TOWING HOOK
Fire Fighting Equipment	1 X GS Fire Pump 25m3/hr @22M Head approx. 1 X emergency Fire pump 25M3/HR @ 22M Head 1 x Fixed CO 2 System
SOLAS Life Save Apparatus	Ship registry and IMO & Class certified
Accommodation	TOTAL 12 Berth

MAIN MACHINERY

Main Propulsion	2 x YANMAR 6AYM-WST Diesel Engine 650BHP (485KW) @ 1900 RPM
Main Generator	2 x 28KW YANMAR 4TNV98GGE2
Oily Water separator	Model CYF0.25Y Cap. 0.25M3/Hr
Sewage System	1 620 M3 Cap



1,300BHP 16TBP 23M Shallow Water Towing Tug

MAIN PARTICULARS

Vessel Name	Kim Heng 1301
IMO No.	9 7 2 2 9 1 2
Year Built	2014
Port of Registry	SINGAPORE
Call Sign	9 V 2 6 8 1
Official No.	3 9 9 3 1 4
MMSI (DSC/EPIRB)	5 6 3 0 2 7 8 5 0
GRT / NRT	1 5 5 / 47
Class/Notation	NK (TUG) NS*MNS*
Harbour Craft	S T 1 5 9 7 H

DIMENSIONS

Length - OA	23.9 M
Length - BP	22.46 M
Beam Moulded	7.30 M
Depth Moulded	3.5 M
Draft Moulded	2.90 M
Deadweight	115 Tonnes
Clear Deck Area	25 M2

COMMUNICATION EQUIPMENT

MF/HF / GMDSS/ LRIT IMMARSAT	1 x Furuno FS-2570C LRIT Furuno FELCOM15 IMMARSAT C : 456321810
NAVTEX / EPIRB / AIS / SART	1 x Furuno NX700 / GME MT-403FF EPIRB / 1 x SART
VHF DSC	ICOM M304 (2118315) VHF-FM Transceiver
P A System	1 x PA System / BNWAS –Bridge Nav Watch alarm
Sat Broadband	Sailor FBB-150 Fleet Broadband

NAVIGATION EQUIPMENT

Marine Radar	1 x FURUNO 1715 (4396-1079) 24NM
Auto Pilot / Gyro Compass	1 x Auto Pilot Gyro compass 1 x Magnetic Compass CGY-165
GPS / Speed Log	Furuno GP-32 (6327-3306) / 1x Furuno DS-80 Speed Log
Echo Sounder	1 x Echo Sounder

CAPACITY

Cruise Speed	8 Knots approx.
Fuel Oil Capacity	106 M3 (100%Full)
Consumption/24hr	4.5 M3 (85%MCR)
Consumption/24hr	4.0 M3 (75%MCR)
Designed Speed	10.0 knots (100mcr)
Bollard Pull	15.82 Tonnes
Endurance	21 days (Estimate)
Fresh Water	29 m3 (100% Full)
Ballast Tank	45 m3 (100% Full)

DECK EQUIPMENT

Tow Equipment	1 X 25T SWL TOWING HOOK
Fire Fighting Equipment	1 X GS Fire Pump 25m3/hr @22M Head approx. 1 X emergency Fire pump 25M3/HR @ 22M Head 1 x Fixed CO 2 System
SOLAS Life Save Apparatus	Ship registry and IMO & Class certified
Accommodation	TOTAL 12 Berth

MAIN MACHINERY

Main Propulsion	2 x YANMAR 6AYM-WST Diesel Engine 650BHP (485KW) @ 1900 RPM
Main Generator	2 x 34KW YANMAR 4TNV98-GGE2
Oily Water separator	Model CYF0.25Y Cap. 0.25M3/Hr
Sewage System	1 620 M3 Cap



1,300BHP 16TBP 23M Shallow Water Towing Tug

MAIN PARTICULARS

Vessel Name	Kim Heng 1302
I M O No.	9 6 7 9 6 4 6
Year Built	2012
Port of Registry	SINGAPORE
Call Sign	9 V 2 6 8 2
Official No.	3 9 9 3 1 5
MMSI (DSC/EPIRB)	5 6 3 0 2 7 8 6 0
GRT / NRT	1 4 1 / 4 3
Class/Notation	NK (TUG) NS*MNS*
Harbour Craft	ST 1 4 5 3 Z

DIMENSIONS

Length - OA	23.5 M
Length - BP	22.0 M
Beam Moulded	7.32 M
Depth Moulded	3.2 M
Draft Moulded	2.70 M
Deadweight	115 Tonnes
Clear Deck Area	25 M2

COMMUNICATION EQUIPMENT

MF/HF / GMDSS/ LRIT IMMARSAT	ICOM M710 (4105725) GMDSS A1 – A3
NAVTEX / EPIRB	1 x Furuno NX700 / SAMYUNG SEP-406FF EPIRB
AIS / SART	1 x MCMURDO S4 SART
VHF DSC	ICOM M304 (2107401) VHF-FM Transceiver ICOM IC-V82 – 2 SET
P A System	1 x PA System / BNWAS – Bridge Nav Watch alarm
Sat Broadband	Sailor FBB-150 Fleet Broadband

NAVIGATION EQUIPMENT

Marine Radar	1 x FURUNO 1715 (4396-1079) 24NM
Auto Pilot / Gyro Compass	1 x Auto Pilot Gyro compass 1 x Magnetic Compass CGY-165
GPS / Speed Log	Furuno GP-32 (6327-3306) / 1x Furuno DS-80 Speed Log
Echo Sounder	1 x FUUNO FCV-627 Echo Sounder

CAPACITY

Cruise Speed	8 Knots approx.
Fuel Oil Capacity	90 M3 (100%Full)
Consumption/24hr	4.5 M3 (85%MCR)
Consumption/24hr	3.5 M3 (75%MCR)
Designed Speed	10.0 knots (100mcr)
Bollard Pull	15.82 Tonnes
Endurance	21 days (Estimate)
Fresh Water	26 m3 (100% Full)
Ballast Tank	45 m3 (100% Full)

DECK EQUIPMENT

Tow Equipment	1 X 25T SWL TOWING HOOK
Fire Fighting Equipment	1 X GS Fire Pump 25m3/hr @22M Head approx. 1 X emergency Fire pump 25M3/HR @ 22M Head 1 x Fixed CO 2 System
SOLAS Life Save Apparatus	Ship registry and IMO & Class certified
Accommodation	TOTAL 12 Berth

MAIN MACHINERY

Main Propulsion	2 x YANMAR 6AYM-WST Diesel Engine 650BHP (485KW) @ 1900 RPM
Main Generator	2 x 34KW YANMAR 4TNV98-GGE2
Oily Water separator	Model CYF0.25Y Cap. 0.25M3/Hr
Sewage System	1 620 M3 Cap



760BHP 16M Aluminum Fast Response Boat

MAIN PARTICULARS

Vessel Name	Kim Heng 68
Year Built	2016
Port of Registry	SINGAPORE
Call Sign	9 V 5 2 2 7
Official No.	4 0 8 4 0
MMSI (DSC/EPIRB)	5 6 3 0 3 8 1 7 0
GRT / NRT	3 2 / 9
Class/Notation	BV I + MACH
BV Reg No.	3 1 3 6 3 S
Harbour Craft	S C 4 8 1 3 I

DIMENSIONS

Length - OA	15.5 M
Beam Moulded	4.5 M
Depth Moulded	2.0 M
Draft Moulded	0.82 M
Deadweight	2.2 Tonnes
Clear Deck Area	Approx. 20 M2

COMMUNICATION EQUIPMENT

EPIRB	1 EACH / 563 038 170
VHF DSC	2 x Horizon HX290S VHF-FM
P A System	1 x PA System / 1 x BNWAS

NAVIGATION EQUIPMENT

Marine Radar	1 x SAMYUNG SMR-3700
Auto Pilot / Gyro Compass	1 x Auto Pilot Gyro compass 1 x Magnetic Compass CGY-165
GPS / Speed Log	Furuno GP-32 GPS
Echo Sounder	Furuno FCV-620

CAPACITY

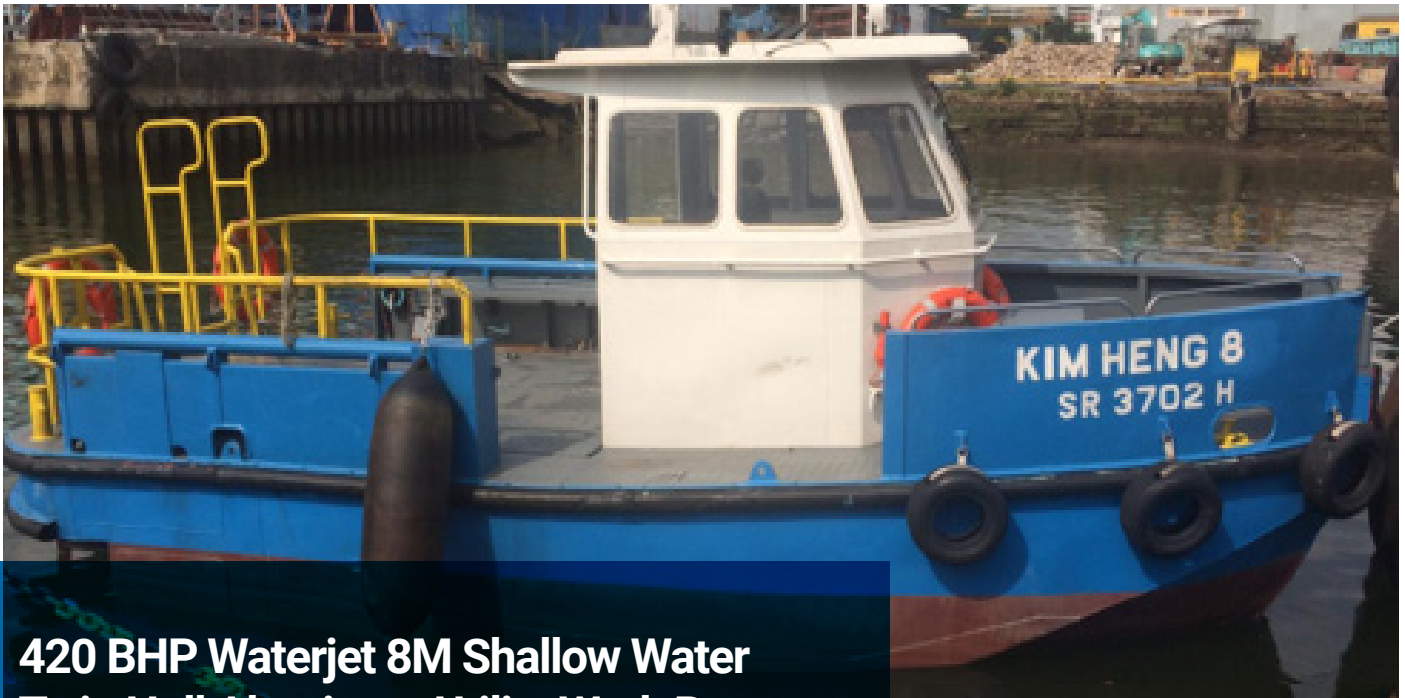
Cruise Speed	22 knots (85%mcrr)
Fuel Oil Capacity	2.6 M3 (100%Full)
Fuel Consumption/hr	150L/hr (85%MCR)
Designed Speed	25 knots (100%mcrr)
Bollard Pull	3.00 Tonnes
Endurance	400 Nautical-Miles
Fresh Water	500 Litre (100% Full)

DECK EQUIPMENT

Fire Fighting Equipment	1 X Emergency Fire pump 35M3/HR @ 22M Head
SOLAS Life Save Apparatus	Ship registry and IMO & Class certified
Aircondition Accommodation	2 Berth / Seating 12 Pax

MAIN MACHINERY

Main Propulsion	2 x MAN D2866LXE40 Diesel Engine 379BHP (279KW) @ 1800 RPM
Main Generator	2 x Marine Genset 12V/1P/50Hz 11kw 11kva KOHLER 11EFKOZD-12V-1PH-GM89506-GA3



420 BHP Waterjet 8M Shallow Water Twin Hull Aluminum Utility Work Boat

MAIN PARTICULARS

Vessel Name	ZALE 8
Year Built	2017
Port of Registry	SINGAPORE
MMSI (DSC/EPIRB)	5 6 3 0 6 5 1 7 0
GRT / NRT	1 0 / 2
Harbour Craft	SR 3 7 0 2 H

DIMENSIONS

Length - OA	8.0 M
Beam Moulded	3.5 M
Depth Moulded	1.4 M
Draft Moulded	0.82 M
Deadweight	1.5 Tonnes
Clear Deck Area	Approx.10M2

COMMUNICATION EQUIPMENT

EPIRB	1 EACH / 563 038 170
VHF DSC	2 x Horizon HX290S VHF-FM
P A System	1 x PA System / 1 x BNWAS

NAVIGATION EQUIPMENT

Compass	Ritchie Magnetic Compass
GPS	GARMIN GPS MAP 4012
AIS	EM-TRAK B100 AAIS Transponder
VHF DSC	ICOM MC-304 Marine VHF

CAPACITY

Cruise Speed	15 knots (85%mcR)
Fuel Oil Capacity	700 Litre (100%Full)
Consumption/24hr	70 Litre / hr (85%MCR)
Designed Speed	23 knots (Max)
Bollard Pull	3 Tonnes
Endurance	200 Nautical Miles
Fresh Water	100 Litre (100% Full)

DECK EQUIPMENT

Fire Fighting Equipment	1 X Emergency Fire pump 35M3/HR @ 22M Head
SOLAS Life Save Apparatus	IMO LSA / Port Harbor Compliance
Accommodation	8 Persons

MAIN MACHINERY

Main Propulsion	2 x CUMMINS 6BT5.9 Diesel Engine 210 BHP(186.5KW) @ 2500 RPM GEARBOX ZF 220 1:128
Waterjet Propulsion	2 x Hamilton Jet HJ274



163 BHP Waterjet 6.3M Shallow Water Aluminum Utility Work Boat

MAIN PARTICULARS

Vessel Name	ZALE RESPONDER
Port of Registry	SINGAPORE
MMSI (DSC/EPIRB)	563 063 480
GRT / NRT	8 / 2
Harbour Craft	SR 3769 I

DIMENSIONS

Length - OA	6.6 M
Length - BP	6.3 M
Beam Moulded	2.3 M
Depth Moulded	1.18 M
Draft Moulded	0.30 M
Deadweight	1.5 Tonnes

COMMUNICATION EQUIPMENT

EPIRB	1 EACH / 563 038 170
VHF DSC	2 x Horizon HX290S VHF-FM
P A System	1 x PA System / 1 x BNWAS

NAVIGATION EQUIPMENT

Gyro Compass	Ritchie Compass
GPS	Raymarine A65 GPS Chart plotter
AIS	Mcmurdo M10 Class B AIS Transponder
VHF DSC	Marine VHF Radio
Lights	1 x Searchlight

CAPACITY

Cruise Speed	15 - 25 knots
Diesel Fuel Oil Capacity	110 Litre (100%Full)
Designed Speed	33 knots (100mcr)
Endurance	10 hours/100 Nauticle Mile

DECK EQUIPMENT

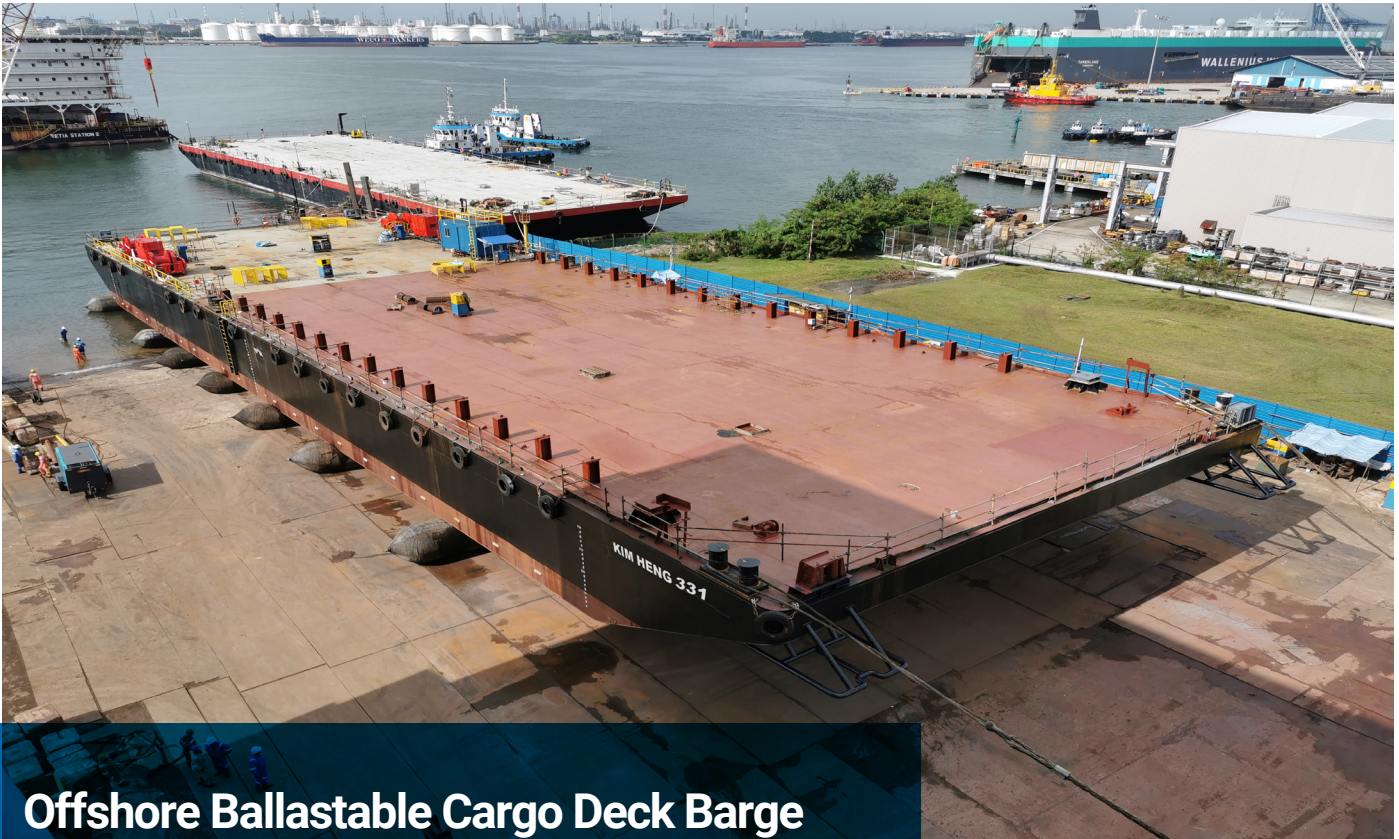
SOLAS Life Save Apparatus	Ship registry and IMO & Class certified
Accommodation	6 Persons

MAIN MACHINERY

Main Propulsion	BUKH STEYR MO164M040 Diesel Engine 163bhp @3600rpm Gearbox ZF45C 1:1
Waterjet Propulsion	Waterjet Alamarin AJ230
Pumps	2 x 24V Electric Bilge Pumps

BARGE PROFILE





Offshore Ballastable Cargo Deck Barge 330ft x 100ft x 20ft Deck Strength 20T/M2

GENERAL DETAIL PARTICULARS

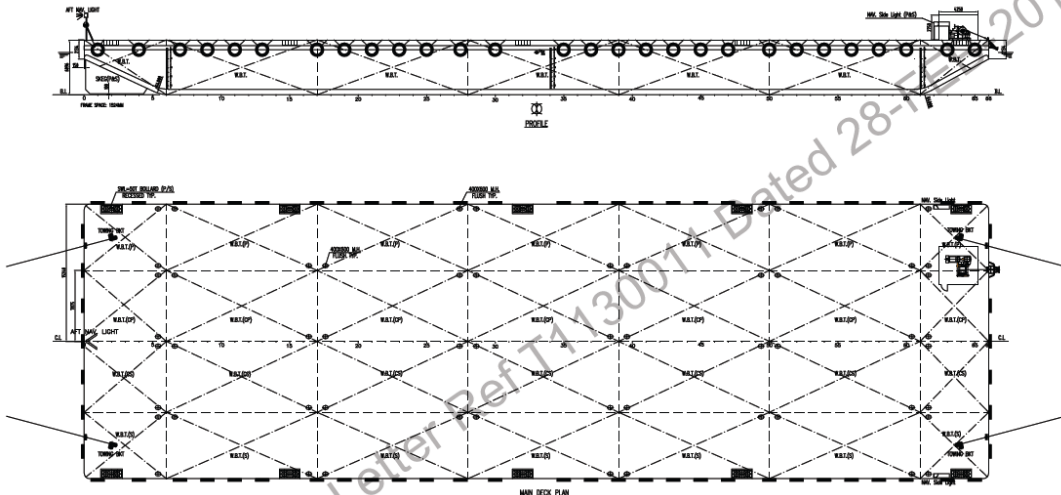
Classification	RINA	Reg. No.	New Con 2025
FLAG	SINGAPORE	Class Notation	C ⚡ pontoon
Official No	New Con 2025	Harbor Craft No.	New Con 2025
GRT / NRT	New Con 2025	Year Built	2025
Length Overall	96.59 M	Breadth Moulded	30.48 M
Depth Moulded	6.10 M	Moulded Draught	4.70 M
DWT *Design draft	11,500 T	Designed Draft	4.70 M*
Light ship Weight	2,230 T	Mean Draft	0.815 M
Clear Deck Area	3000 M2	Deck Load	20 T / M2

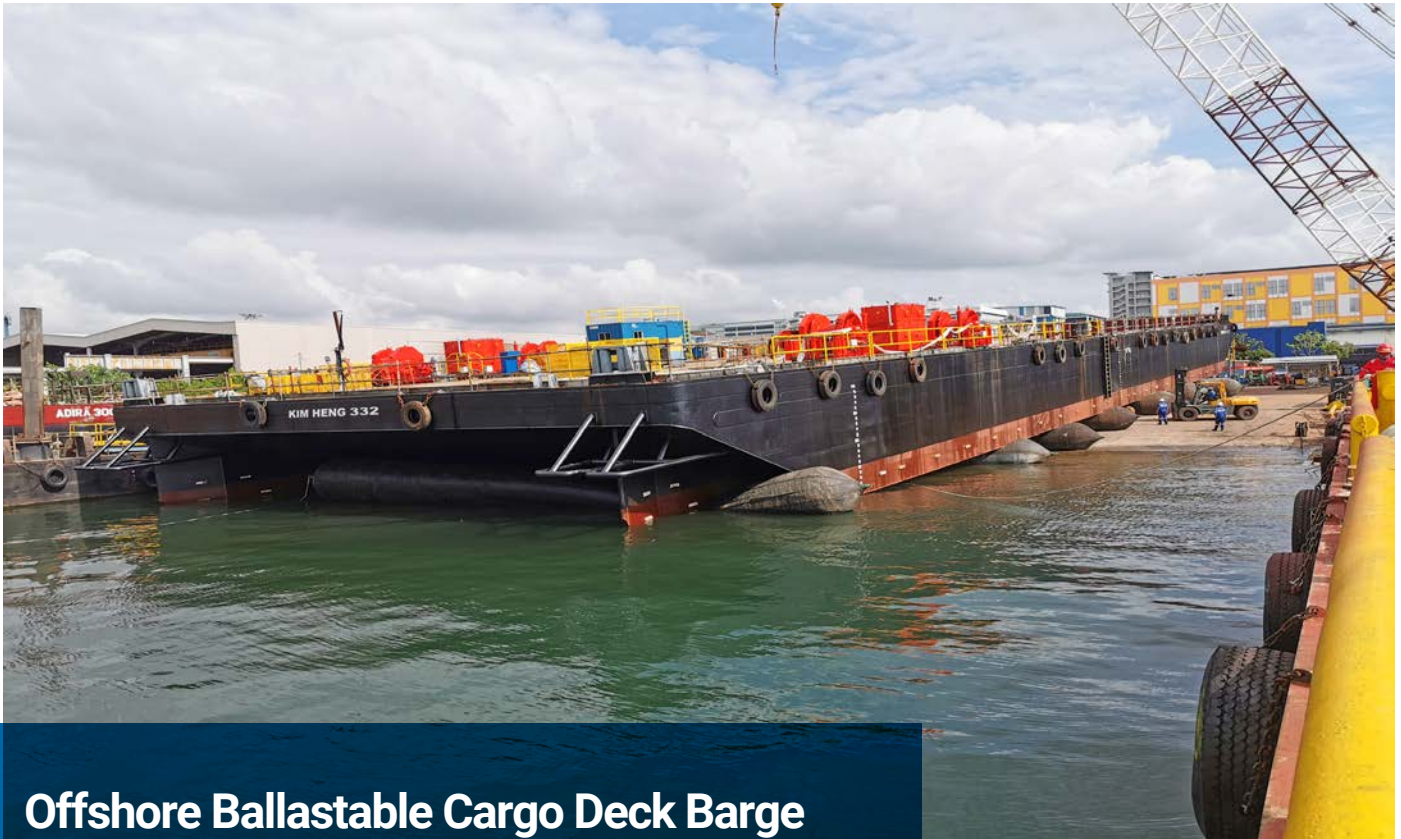
FEATURES

Bulkheads	KIM HENG MARINE & OILFIELD PTE LTD 3 x LONGITUDINAL BULKHEAD 6 X TRANSVERSE BULKHEAD
Tank compartment	28 x Ballastable Water Tank Compartment
Tow Bracket	2 x Tow Bracket SWL 80T Forward 2 x Tow Bracket SWL 80T Aft
Mooring Bollard	10 units Double Bitt Bollard SWL 50T (5 ea @PS & SB)
Anchor winch	1 Deck house w/ Anchor winch c/w anchor

OPTIONAL INSTALLATIONS

Side Stanchion	60 set Stanchion @ PS & @SB
Manual Recovery Winch c/w A Frame for Tow Bridle & Pendant Line	





Offshore Ballastable Cargo Deck Barge 330ft x 100ft x 20ft Deck Strength 20T/M2

GENERAL DETAIL PARTICULARS

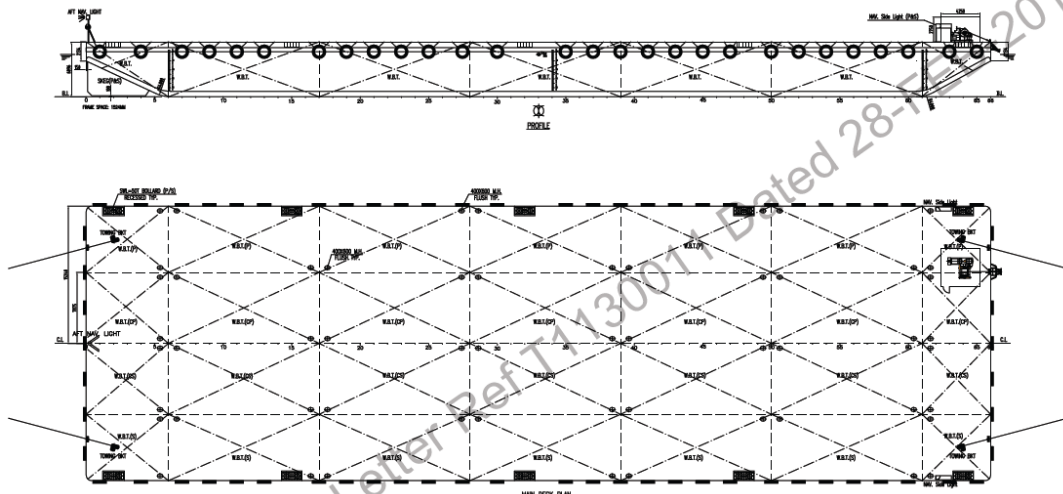
Classification	RINA	Reg. No.	New Con 2025
FLAG	SINGAPORE	Class Notation	C ₂ pontoon
Official No	New Con 2025	Harbor Craft No.	New Con 2025
GRT / NRT	New Con 2025	Year Built	2025
Length Overall	96.59 M	Breadth Moulded	30.48 M
Depth Moulded	6.10 M	Moulded Draught	4.70 M
DWT *Design draft	11,500 T	Designed Draft	4.70 M*
Light ship Weight	2,230 T	Mean Draft	0.815 M
Clear Deck Area	3000 M2	Deck Load	20 T / M2

FEATURES

	KIM HENG MARINE & OILFIELD PTE LTD
Bulkheads	3 x LONGITUDINAL BULKHEAD 6 x TRANSVERSE BULKHEAD
Tank compartment	28 x Ballastable Water Tank Compartment
Tow Bracket	2 x Tow Bracket SWL 80T Forward 2 x Tow Bracket SWL 80T Aft
Mooring Bollard	10 units Double Bitt Bollard SWL 50T (5 ea @PS & SB)
Anchor winch	1 Deck house w/ Anchor winch c/w anchor

OPTIONAL INSTALLATIONS

Side Stanchion	60 set Stanchion @ PS & @SB
Manual Recovery Winch c/w A Frame for Tow Bridle & Pendant Line	





Offshore Ballastable Cargo / Work Barge 250ft x 80ft x 16ft Deck Strength 15T/M2

GENERAL DETAIL PARTICULARS

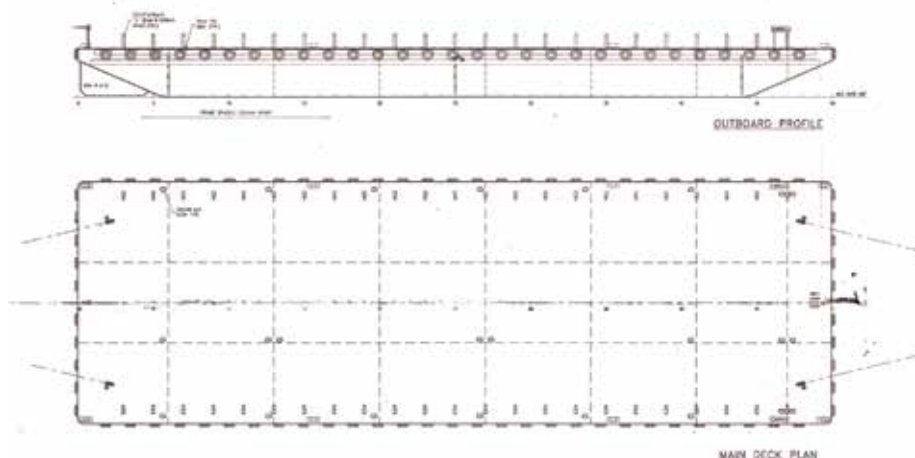
Classification	RINA	REG NO.	1 0 1 4 7 4
FLAG	SINGAPORE	Class Notation	C HULL Pontoon
Official No	4 0 2 3 3 4	Harbor Craft No.	SC5030C
GRT / NRT	2 3 0 6 / 6 9 2	Year Built	2 0 0 6
Length Overall	7 3 . 1 5 M	Breadth Moulded	2 4 . 3 8 M
Depth Moulded	4 . 8 8 M	Moulded Draught	3 . 8 0 M
DWT *Design draft	5 2 8 6 T approx	Designed Draft	3 . 8 0 M*
Light ship Weight	1 2 0 4 T approx	Mean Draft	0 . 8 1 M
Clear Deck Area	1 8 0 0 M2 approx	Deck Load	1 5 T / M2

FEATURES

Bulkheads	2 x LONGITUDINAL BULKHEAD 7 x TRANSVERSE BULKHEAD
Tank compartment	24 x Ballastable Water Tank
Tow Bracket	2 x Tow Bracket SWL 80T Forward 2 x Tow Bracket WWL 80T Aft
Mooring Bollard	8 x Double Bitt Bollard SWL 382 KN
Navigation stands	Port Starboard and Aft
Anchor winch	1 x Diesel Power Anchor winch c/w anchor

OPTIONAL INSTALLATIONS

4 ft Height HD Stanchions - 24 nos. at each Port/ Starboard
Enclosed Winch House



Specifications given herein are believed to be correct but no guaranteed

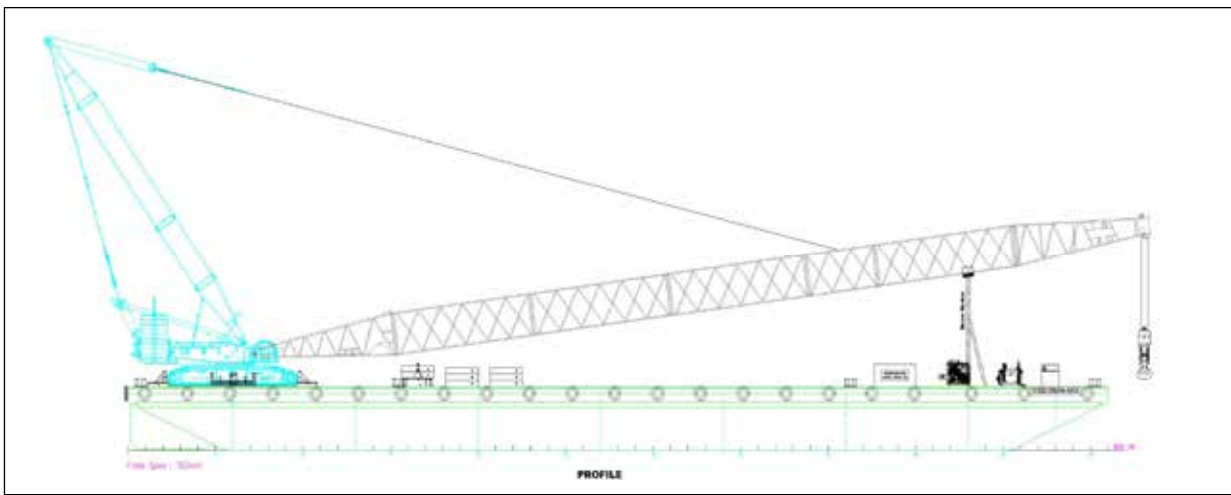


Crawler Crane Work Barge
280ft x 80ft x 16ft Deck Strength 15T / M²
SANY Crawler Crane SCC6000A
600 Tons Maximum Lifting Capacity

GENERAL DETAIL PARTICULARS			
Classification	RINA	RINA REG NO.	RI 102260
Flag	Nieu	Class Notation	C ⚓, Pontoon
Official No	ALFOI - N-1930	Harbor Craft No	SC 4689F
GRT / NRT	2620 / 786	Year Built	2006
Length Overall	85.344M	Breadth Moulded	24.384M
Depth (Moulded)	4.88M	Moulded Draught	3.76M
DWT @ Design Draft	5866T	Light ship Weight	1388T
Clear Deck Area	1800M ²	Deck Load	15T/M ²

FEATURES	
Bulkhead	2 x LONGITUDINAL BULKHEAD 8 x TRANSVERSE BULKHEAD
Tank Compartment	27 x Ballastable Water Tank
Tow Bracket	3 x Tow Bracket SWL 80T Forward 2 x Tow Bracket SWL 80T Aft
Mooring Bollard	8 x Double Bitt Bollard SWL 382 KN
Mooring Winch	4 x 20ton Pull Hydraulic Mooring Winches/ 2 x HPU(T55kw)
Navigation Lights	Port Starboard and Aft
Crane	1- unit 600tons SANY Crawler Crane SCC6000A c/w 66m Boom (SWL 235Ton@30m Radius)

OPTIONAL INSTALLATION
1 unit Winch Control Cabin / 50Hz 440V 3p Generator



Specifications given herein are believed to be correct but no guaranteed

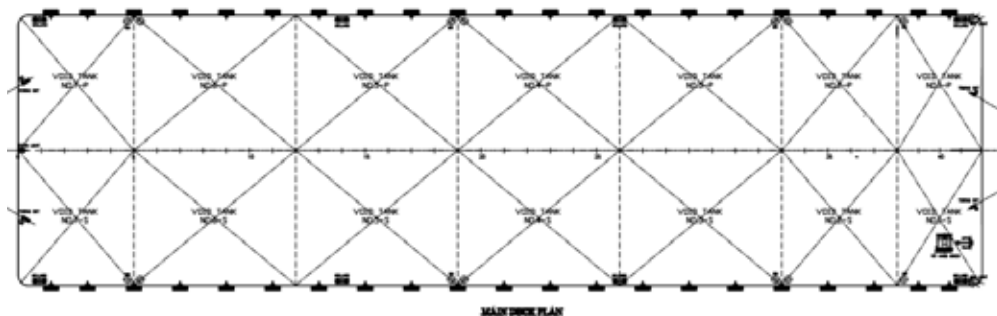


250ft x 70ft x 14ft 10T/M2 Cargo Deck Barge

GENERAL DETAIL PARTICULARS			
Classification	R I N A	RINA NO	23288961
Flag	Singapore	Class Notation	C ⚡ Pontoon
Official No	403743	Harbor Craft No	SC 5161Z
GRT / NRT	1759 / 527	Year Built	2018
Length Overall	76.20 M	Breadth Moulded	21.34 M
Depth (Moulded)	4.27 M	Design Draft	3.29M
DWT @ Design Draft	3956T	Deck Loading	10 t/m2
Lightship Weight	914T		
Clear Deck Area	1650 M2		

FEATURES	
Bulkhead	1 x LONGIDUDINAL BULKHEAD, 6 x TRANSVERSE BULKHEAD
Tank Compartment	14 X VOID TANK
Tow Bracket	2 X SMIT type Tow Bracket SWL 15T @ Forward
Mooring Bollard	6 set Double Bit Bollard @Fore PS & Aft PS

OPTIONAL INSTALLATION	
Stanchion	4 each 4 Ft X 10" I-Beam Stanchion @P&S





Offshore Ballastable / Work Barge

230ft x 64ft x 15.5ft Deck Strength 10T/M2

GENERAL DETAIL PARTICULARS

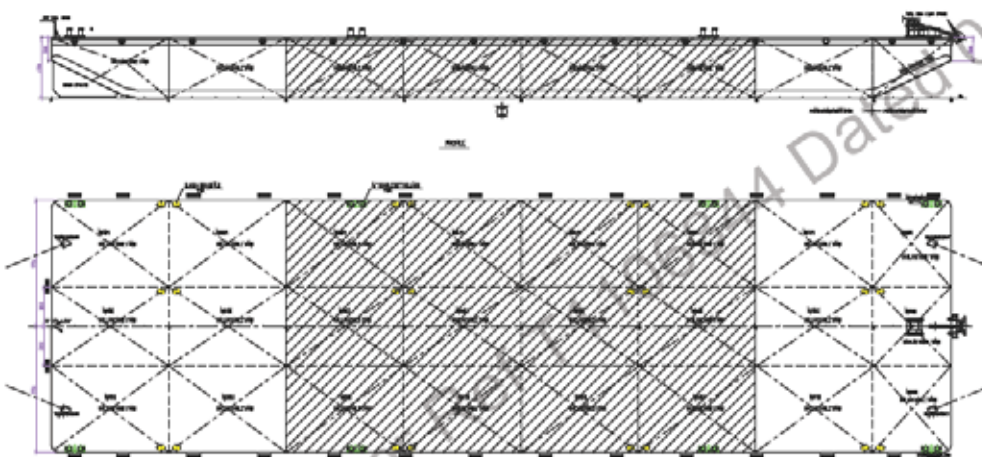
Classification	ABS	REG NO.	32770W
FLAG	SINGAPORE	Class Notation	+100A5 Pontoon
Official No	3 9 8 9 0 2	Harbor Craft No.	S C 4 6 7 2 A
GRT / NRT	1 6 7 8 / 5 0 3	Year Built	2 0 1 4
Length Overall	70.14 M	Breadth Moulded	1 9 . 51 M
Depth Moulded	4 . 72 M	Moulded Draught	3.75 M
DWT *Design draft	4 195 T	Designed Draft	3.75 M*
Light ship Weight	7 7 0 T	Mean Draft	0.6 5 M
Clear Deck Area	1 2 8 0 M2	Deck Strength	1 0 T / M2

FEATURES

Bulkheads	2 x LONGITUDINAL BULKHEAD 7 x TRANSVERSE BULKHEAD
Tank compartment	24 x Ballastable Water Tank
Tow Bracket	2 x Tow Bracket SWL 80T Forward 2 x Tow Bracket SWL 80T Aft
Mooring Bollard	8 x Double Bitt Bollard WLL 395KN
Anchor winch	1 x Anchor winch c/w anchor 1500KG

OPTIONAL INSTALLATIONS

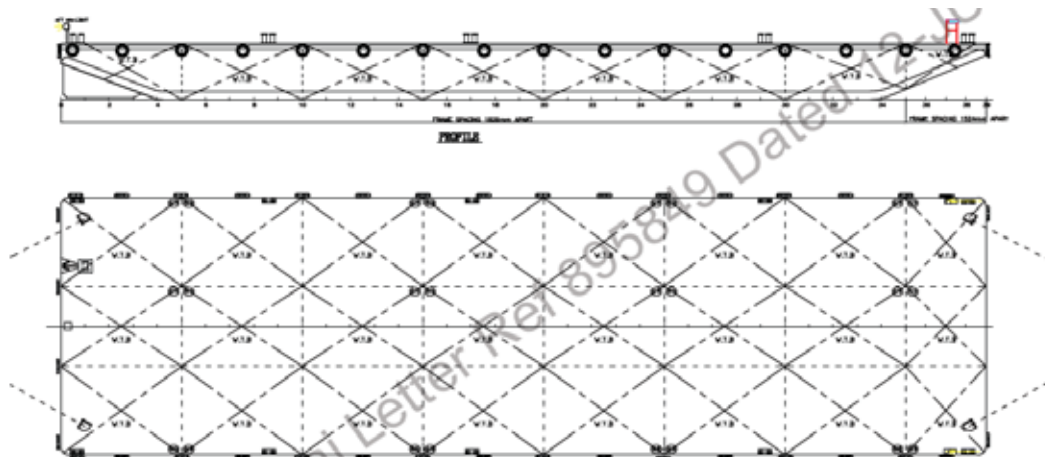
Side Stanchion	36 EA HD I-beam stanchion @ PS & SB
----------------	-------------------------------------





Offshore Ballastable Work Barge 230ft x 64ft x 14ft Deck Strength 15 T/M2

GENERAL DETAIL PARTICULARS				FEATURES	
Classification	ABS	REG NO.	12244893	Bulkheads	2 x LONGITUDINAL BULKHEAD 7 x TRANSVERSE BULKHEAD
FLAG	SINGAPORE	Class Notation	+100A5 Pontoon	Tank compartment	24 x Ballastable Water Tank
Official No	3 9 7 8 7 9	Harbor Craft No.	S C 4 5 8 6 E	Tow Bracket	2 x Tow Bracket SWL 80T Forward 2 x Tow Bracket SWL 80T Aft
GRT / NRT	1 4 7 2 / 4 4 1	Year Built	2 0 1 2	Mooring Bollard	10 x Double Bitt Bollard SWL 260KN
Length Overall	7 0 . 1 1 M	Breadth Moulded	1 9 . 5 2 M	Anchor winch	1 x Anchor winch c/w anchor
Depth Moulded	4 . 2 7 M	Moulded Draught	3 . 3 5 M	OPTIONAL INSTALLATIONS	
DWT *Design draft	3 4 9 1 T	Designed Draft	3 . 3 5 M*	Side Stanchion	36 EA HD I-beam stanchion @ PS & SB
Light ship Weight	7 5 0 T	Mean Draft	0 . 7 0 M		
Clear Deck Area	1 3 6 8 M2	Deck Strength	1 5 T / M2		





Offshore Ballastable Work Barge w/Spud 210ft x 60ft x 12ft Deck Strength 10T/M2

GENERAL DETAIL PARTICULARS

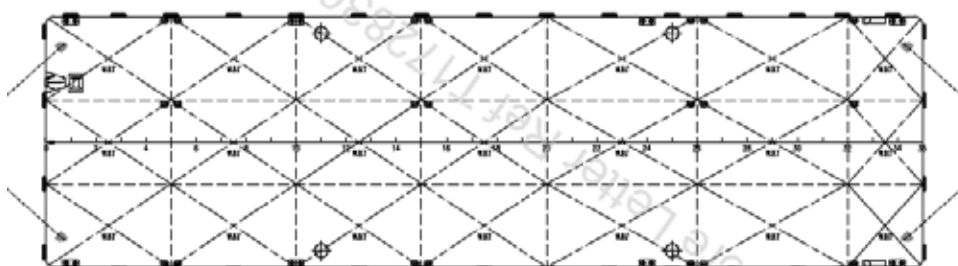
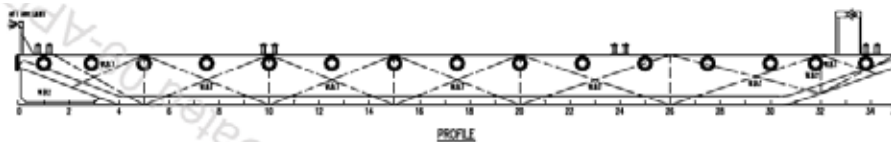
Classification	ABS	REG NO.	13247672
FLAG	SINGAPORE	Class Notation	+100A5 Pontoon
Official No	398138	Harbor Craft No.	SC4579B
GRT / NRT	1059 / 317	Year Built	2013
Length Overall	64.05 M	Breadth Moulded	18.30 M
Depth Moulded	3.66 M	Moulded Draught	2.81 M
DWT *Design draft	2453 T	Designed Draft	2.81 M*
Light ship Weight	525 T	Mean Draft	0.55 M
Clear Deck Area	1180 M2	Deck Strength	10 T / M2

FEATURES

Bulkheads	2 x LONGITUDINAL BULKHEAD 6 x TRANSVERSE BULKHEAD
Tank compartment	21 x Ballastable Water Tank
Tow Bracket	2 x Tow Bracket SWL 80T Forward 2 x Tow Bracket SWL 80T Aft
Mooring Bollard	8 x Double Bitt Bollard SWL 196 KN
Anchor winch	1 x Anchor winch c/w anchor 700KG

OPTIONAL INSTALLATIONS

Side Stanchion	32 EA HD I-beam stanchion @ PS & SB
----------------	-------------------------------------





180 Ft Work Barge w/spuds 250T Crawler Crane SANY SCC2500A

GENERAL DETAIL PARTICULARS

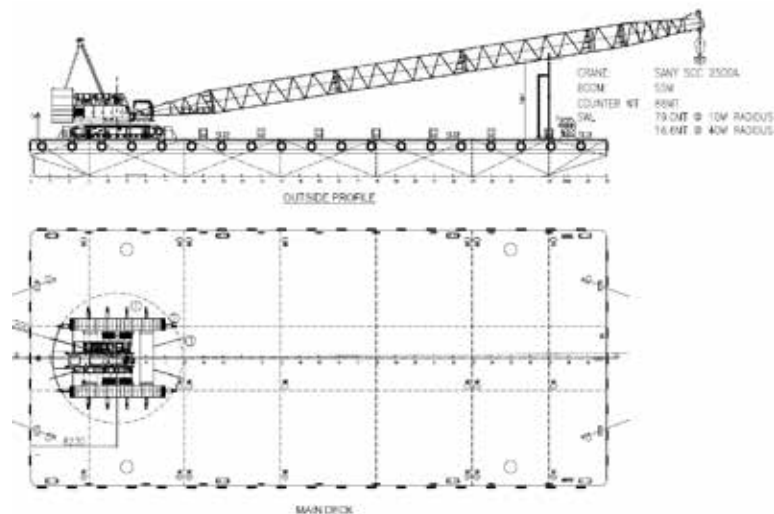
Classification	Registro Italiano Navale (RINA)	RINA REG NO	103442
Flag	Singapore	Class Notation	C ⚓ pontoon ; unrestricted navigation
Official No	403048	Harbor Craft No	SR 4089 D
GRT / NRT	1255 / 376	Year Built	2023
Length Overall	54.86 M	Breadth Moulded	24.38 M
Depth (Moulded)	3.66 M	Designed Draft	2.66 M
DWT @ Design Draft	2567.80 T	Mean draft	0.7 M
Lightship Weight	776 T	Deck Loading	20 t/m2
Clear Deck Area	1200 M2		

FEATURES

Bulkhead	2 x LONGITUDINAL BULKHEAD, 6 x TRANSVERSE BULKHEAD
Tank Compartment	21 X BALLASTABLE WATERTIGHT TANK
Tow Bracket	4 X SMIT type Tow Bracket SWL 65T @ Forward & Aft
Mooring Bollard	8 set Double Bit Bollard @Fore PS & Aft PS
Anchor Winch	1 x Manual Anchor Winch c/w Anchor

INSTALLATION

250T Crawler Crane SANY SCC2500A Boom 55 M Counterweight 86 T
 SWL 79.0T @ 10M Radius / SWL 16.6T @ 40M Radius
 Crane MOM LF Registration number: LM1042885V



Specifications given herein are believed to be correct but no guaranteed



Crawler Crane Work Barge w/Spud 180ft x 70ft x 14ft Deck Strength 15T/M2

GENERAL DETAIL PARTICULARS

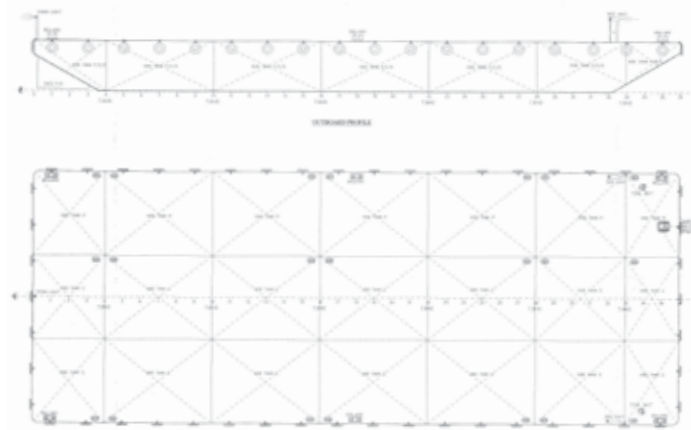
Classification	Germanischer Lloyd	REG NO.	1 1 5 0 0 1
FLAG	SINGAPORE	Class Notation	+100A5 Pontoon
Official No	3 9 4 9 2 1	Harbor Craft No.	S R 2 7 6 3 D
GRT / NRT	1 2 6 0 / 3 7 8	Year Built	2 0 1 8
Length Overall	5 2 . 6 7 M	Breadth Moulded	2 1 . 3 4 M
Depth Moulded	4 . 2 7 M	Light Draft w/crane	1 . 2 0 M
DWT *Design draft	3 1 5 3 T	Designed Draft	3 . 4 9 M*
Light ship Weight	6 3 6 T	Mean Draft	0 . 6 5 M
Clear Deck Area	1 1 0 0 M2	Deck Strength	1 5 T / M2

FEATURES

Bulkheads	2 x LONGITUDINAL BULKHEAD 6 x TRANSVERSE BULKHEAD
Tank compartment	2 1 x TANK COMPARTMENT
Tow Bracket	2 Tow Bracket SWL 25T @ FWD & AFT
Mooring Bollard	8 set Double Bitt Bollard @Port & Starboard
Anchor winch	1 x Manual Anchor winch c/w anchor
Navigation Lights	Port , Starboard & Stern

OPTIONAL INSTALLATIONS

3 Set x 25 M Spud & 26 Set 6ft x 10" I-Beam stanchion





Work Barge w/Spud & Ramp

180ft x 50ft x 12ft Deck Strength 15T/M2

GENERAL DETAIL PARTICULARS

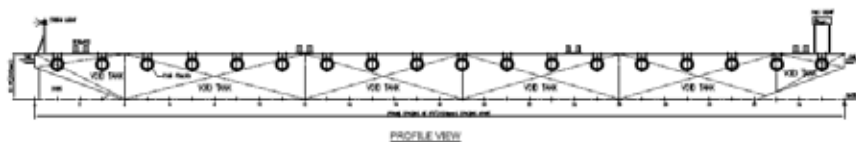
FLAG	SINGAPORE	Class Notation	+A1 barge
Official No	395492	Harbor Craft No.	SR3045G
GRT / NRT	629 / 188	Year Built	2009
Length Overall	54.86 M	Breadth Moulded	15.24 M
Depth Moulded	3.05 M	Light Draft w/crane	1.10 M
DWT *Design draft	1477 T	Designed Draft	2.33 M*
Light ship Weight	324 T	Mean Draft	0.48 M
Clear Deck Area	800 M2	Deck Strength	15 T / M2
Clear Deck w/crane	400 M2	Crane MOM LE Reg.	LM 078204V

FEATURES

Bulkheads	1 x LONGITUDINAL BULKHEAD 5 x TRANSVERSE BULKHEAD
Tank compartment	12 x BALLASTABLE WATER TIGHT TANK
Tow Bracket	2 Set Tow Bracket SWL 25T @ FWD & AFT
Mooring Bollard	8 set Double Bitt Bollard @Port & Starboard
Anchor winch	1 x Manual Anchor winch c/w anchor
Navigation Lights	Port, Starboard & Stern

OPTIONAL INSTALLATIONS

2 Set x 25 M Spud & 13 Set 6ft x 10" I-Beam stanchion
280 T Crawler Crane IHI CCH 2800- HK 35-CR12 BOOM 45M
SWL 72.5T @ 14 M Radius / SWL 26T @ 28M Radius





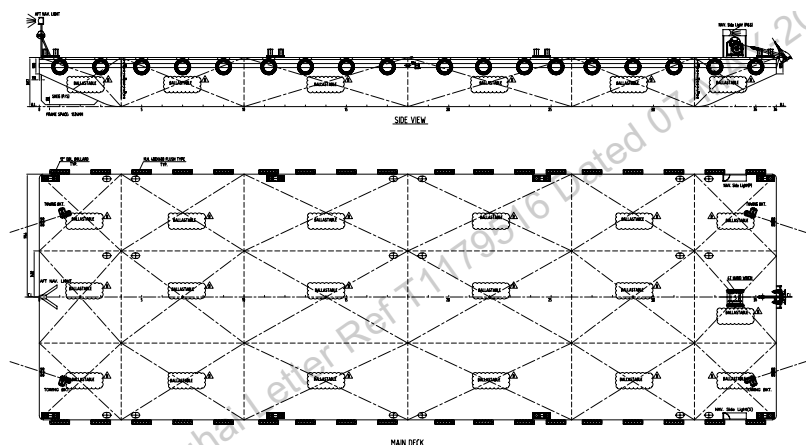
Ballastable Tank Cargo Deck Barge 180ft x 60ft x 12ft Deck Strength 15T/M2

GENERAL DETAIL PARTICULARS

Classification	ABS	REG NO.	15256234
FLAG	SINGAPORE	Class Notation	+A1 barge
Official No	400001	Harbor Craft No.	S C 4 7 3 7 Z
GRT / NRT	9 2 8 / 2 7 8	Year Built	2 0 1 5
Length Overall	5 4 . 8 6 M	Breadth Moulded	1 8 . 2 9 M
Depth Moulded	3 . 6 6 M	Moulded Draught	3 . 0 0 M
DWT *Design draft	2 3 0 0 T	Designed Draft	3 . 0 0 M*
Light ship Weight	5 2 5 T	Mean Draft	0 . 5 0 M
Clear Deck Area	980 M2	Deck Strength	15 T / M 2

FEATURES

Bulkheads	2 x LONGITUDINAL BULKHEAD 5 x TRANSVERSE BULKHEAD
Tank compartment	18 x BALLASTABLE TANK COMPARTMENT
Tow Bracket	2 Tow Bracket SWL 20T @ FWD & AFT
Mooring Bollard	8 set Double Bitt Bollard @Port & Starboard
Anchor winch	1 x Manual Anchor winch c/w anchor
Navigation Lights	Port, Starboard and Stern

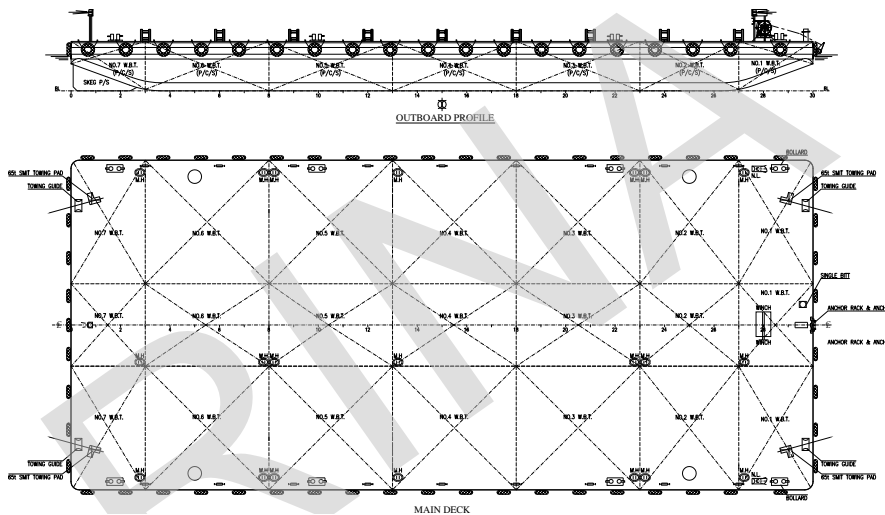


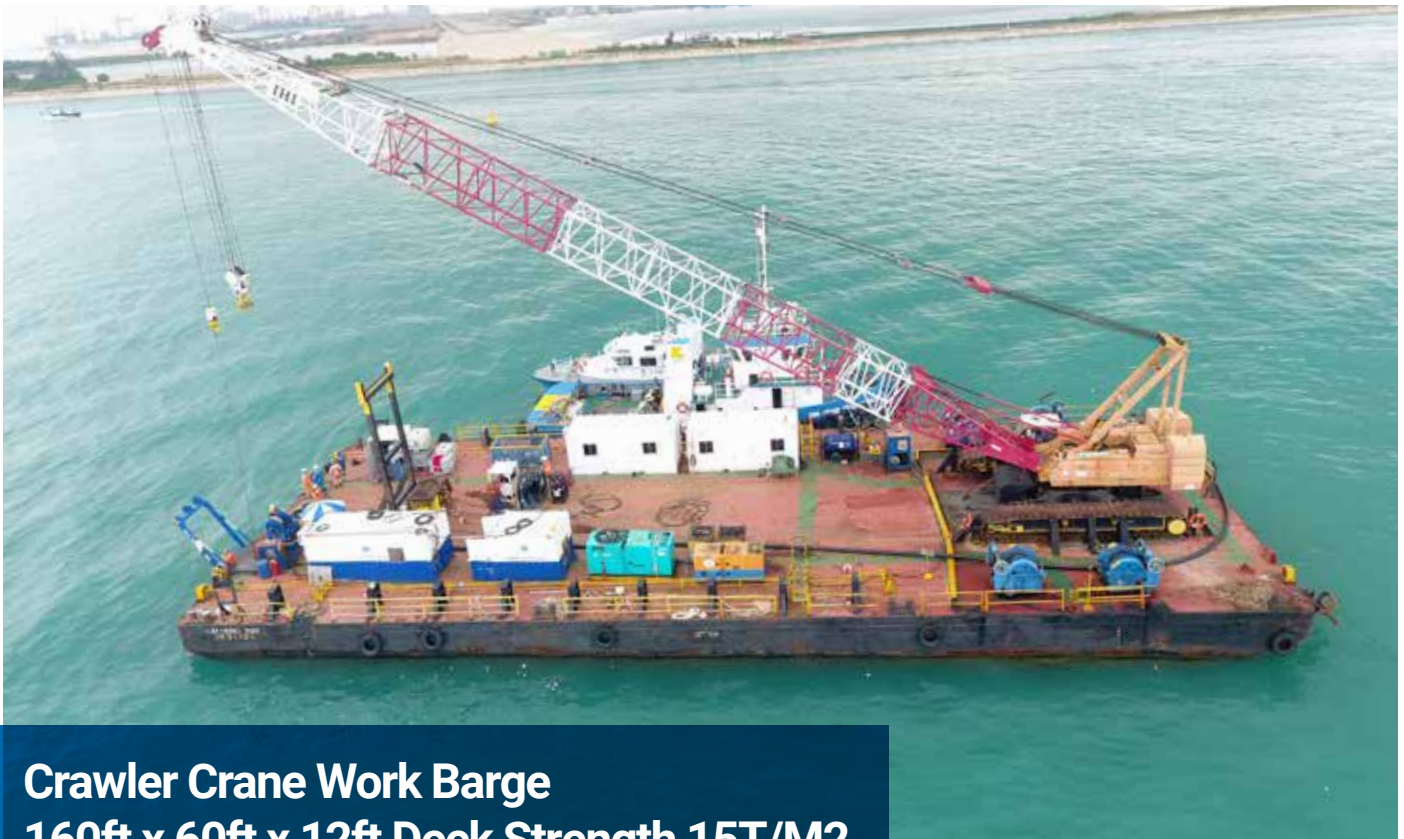


180ft x 80ft x 12ft 20T/M2 Cargo Deck Barge w/spuds

GENERAL DETAIL PARTICULARS			
Classification	RINA	RINA REG NO	103698
Flag	Singapore	Class Notation	C ⚓ pontoon ; unrestricted navigation
Official No	403113	Harbor Craft No	SC 5113Z
GRT / NRT	1255 / 376	Year Built	2023
Length Overall	52.69 M	Breadth Moulded	24.38 M
Depth (Moulded)	3.65 M	Designed Draft	2.66 M
DWT @ Design Draft	2567.80 T	Mean draft	0.7 M
Lightship Weight	776 T	Deck Loading	20 t/m2
Clear Deck Area	1200 M2		

FEATURES	
Bulkhead	2 x LONGITUDINAL BULKHEAD, 6 x TRANSVERSE BULKHEAD
Tank Compartment	21 X BALLASTABLE WATERTIGHT TANK
Tow Bracket	4 X SMIT type Tow Bracket SWL 65T @ Forward & Aft
Mooring Bollard	8 set Double Bit Bollard @Fore PS & Aft PS
Mooring Winch	4 X Hydraulic Winch, 20Ton @First Layer
Anchors	4 X Flipper Delta 2Ton, 300m, Dia 32mm Wire





Crawler Crane Work Barge

160ft x 60ft x 12ft Deck Strength 15T/M2

280T Crane IHI CCH 2800

GENERAL DETAIL PARTICULARS

Classification	DNV GL	REG NO.	118006
FLAG	SINGAPORE	Class Notation	+100A5 Pontoon
Official No	400000	Harbor Craft No.	S R 3 7 4 3 E
GRT / NRT	8 1 4 / 244	Year Built	2 0 1 5
Length Overall	46.768 M	Breadth Moulded	1 8 . 2 9 M
Depth Moulded	3 . 6 6 M	Moulded Draught	2 . 9 6 M
DWT *Design draft	1 9 48 T	Designed Draft	2 . 9 4 M*
Light ship Weight	4 5 0 T	Mean Draft	0 . 4 8 M
Clear Deck Area	855 M2	Deck Strength	15 T / M 2
Crane MOM LE Reg.	LM 083034A		

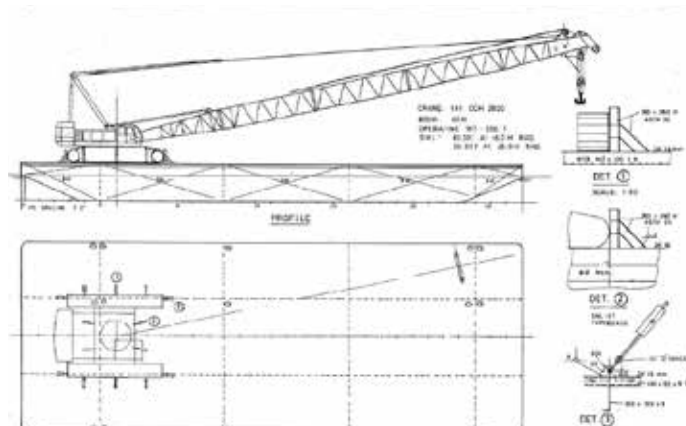
FEATURES

Bulkheads	2 x LONGITUDINAL BULKHEAD 4 x TRANSVERSE BULKHEAD
Tank compartment	15 x Ballastable Tanks
Tow Bracket	2 Tow Bracket SWL 20T @ FWD & AFT
Moorings Bollard	8 set Double Bitt Bollard @Port & Starboard
Anchor winch	1 x Manual Anchor winch c/w anchor
Navigation Lights	Port, Starboard and Stern

OPTIONAL INSTALLATIONS

280T CRAWLER CRANE IHI CCH 2800 –HK 77 CR-15 BOOM 45 M

SWL 72.5T @ 14M Radius / SWL 26T @ 28 M Radius





120ft x 40ft x 8ft 10T/M2 Cargo Deck Barge

GENERAL DETAIL PARTICULARS

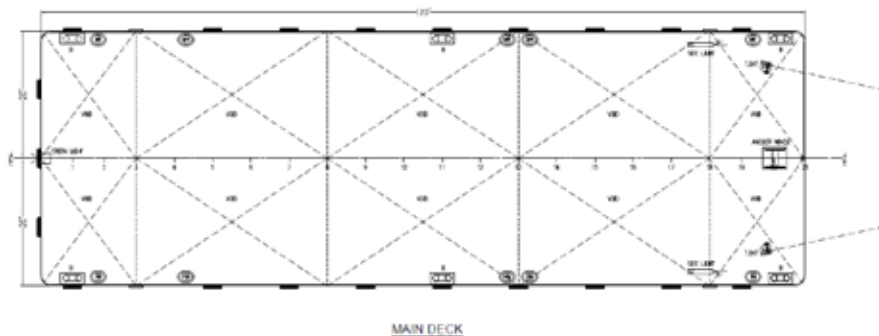
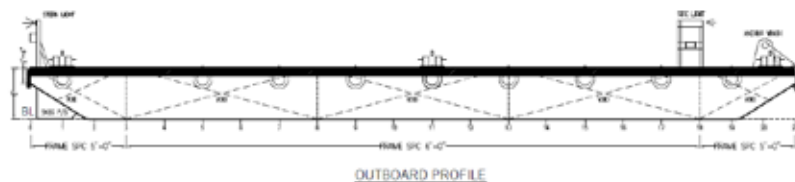
Classification	American Bureau of Shipping (ABS)	ABS REG NO	YY288420
Flag	Singapore	Class Notation	⚡ A1, Barge
Official No	402990	Harbor Craft No	SC 5112A
GRT / NRT	269 / 80	Year Built	2023
Length Overall	36.58 M	Breadth Moulded	12.19 M
Depth (Moulded)	2.44 M	Designed Draft	1.88 M
DWT @ Design Draft	631.60 T	Mean draft	0.43 M
Lightship Weight	172 T	Deck Loading	10 t/m2
Clear Deck Area	400 M2		

FEATURES

Bulkhead	1 x LONGITUDINAL BULKHEAD, 4 x TRANSVERSE BULKHEAD
Tank Compartment	10 X BALLASTABLE WATERTIGHT TANK
Tow Bracket	2 X SMIT type Tow Bracket SWL 15T @ Forward
Mooring Bollard	6 set Double Bit Bollard @Fore PS & Aft PS
Anchor Winch	1 x 5T Manual Anchor Winch c/w Anchor

OPTIONAL INSTALLATION

Stanchion	6 each 4 Ft X 10" I-Beam Stanchion @P&S
-----------	---





Ballastable Tank Cargo Deck Barge w/ Spud 120ft x 40ft x 8ft Deck Strength 10T/M2 Multi-Function Load Test Lifting Eye

GENERAL DETAIL PARTICULARS

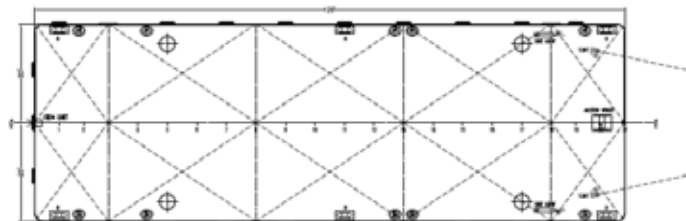
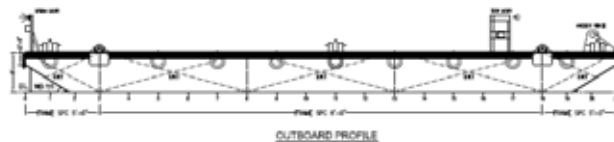
Classification	Germanischer Lloyd	REG NO.	1 1 7 4 5 6
FLAG	SINGAPORE	Class Notation	+100A5 Pontoon
Official No	3 9 8 3 6 8	Harbor Craft No.	S R 3 7 4 9 D
GRT / NRT	2 6 8 / 8 1	Year Built	2 0 1 3
Length Overall	3 5 . 1 1 M	Breadth Moulded	12.19 M
Depth Moulded	2.44 M	Moulded Draught	1.88 M
DWT *Design draft	650 T	Designed Draft	1.88 M*
Light ship Weight	153.63 T	Mean Draft	0.386 M
Clear Deck Area	400 M2	Deck Strength	10 T / M 2

FEATURES

Bulkheads	1 X LONGITUDINAL BULKHEAD 4 X TRANSVERSE BULKHEAD
Tank compartment	10 x BALLASTABLE WATER TIGHT TANK
Lifting Eye Lug	4 each SWL 300T Lifting Eye Plate
Tow Bracket	2 Smit Type Tow Bracket SWL 15T @Forward
Mooring Bollard	6 set Double Bitt Bollard @Fore PS & Aft PS
Anchor winch	1 x 5T Manual Anchor winch c/w anchor

OPTIONAL INSTALLATIONS

Stanchion	6 each 6ft x 10" I-Beam stanchion @P&S
-----------	--





120ft x 40ft x 8ft 10T/M2 Cargo Deck Barge

GENERAL DETAIL PARTICULARS

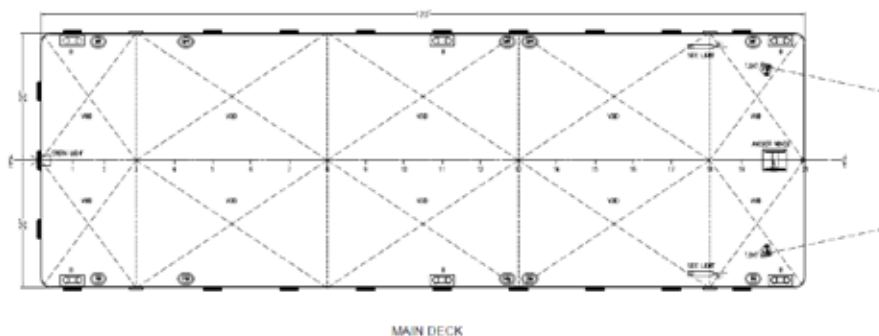
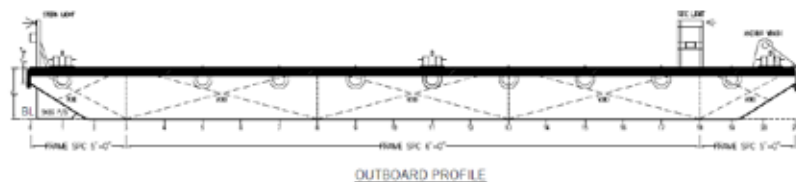
Classification	American Bureau of Shipping (ABS)	ABS REG NO	23288961
Flag	Singapore	Class Notation	⚡ A1, Barge
Official No	403157	Harbor Craft No	SC 5129F
GRT / NRT	268 / 80	Year Built	2023
Length Overall	35.11 M	Breadth Moulded	12.19 M
Depth (Moulded)	2.44 M	Designed Draft	1.88 M
DWT @ Design Draft	631.60 T	Mean draft	0.43 M
Lightship Weight	172 T	Deck Loading	10 t/m2
Clear Deck Area	400 M2		

FEATURES

Bulkhead	1 x LONGITUDINAL BULKHEAD, 4 x TRANSVERSE BULKHEAD
Tank Compartment	10 X BALLASTABLE WATERTIGHT TANK
Tow Bracket	2 X SMIT type Tow Bracket SWL 15T @ Forward
Mooring Bollard	6 set Double Bit Bollard @Fore PS & Aft PS
Anchor Winch	1 x 5T Manual Anchor Winch c/w Anchor

OPTIONAL INSTALLATION

Stanchion	6 each 4 Ft X 10" I-Beam Stanchion @P&S
-----------	---





Platform Ballastable Tank Barge

100ft x 30ft x 8ft Deck Strength 5T/M2

Multi-Function Load Test Lifting Eye

GENERAL DETAIL PARTICULARS

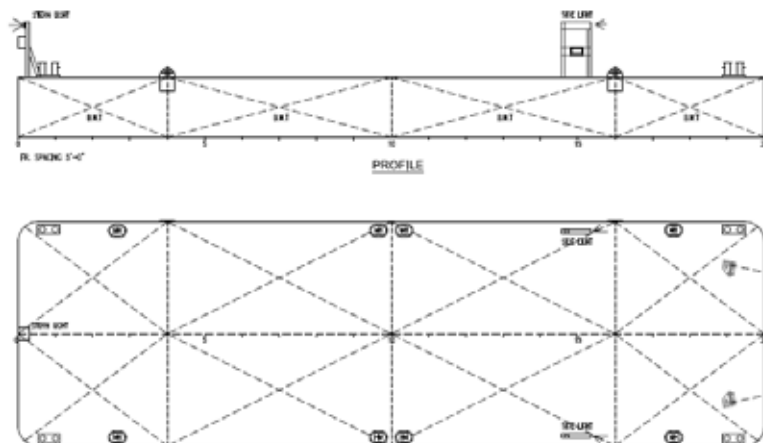
Classification	RINA	REG NO.	99248
FLAG	SINGAPORE	Class Notation	+100A5 Pontoon
Official No	3 9 6 4 3 9	Harbor Craft No.	S C 4 6 7 8 J
GRT / NRT	1 5 9 / 4 8	Year Built	2 0 1 4
Length Overall	3 0 . 4 8 M	Breadth Moulded	9 . 1 4 M
Depth Moulded	2.44 M	Moulded Draught	1 . 88 M
DWT *Design draft	4 00 T	Designed Draft	1.88 M*
Light ship Weight	113.63 T	Mean Draft	0.386 M
Clear Deck Area	280 M2	Deck Strength	5 T / M 2

FEATURES

Bulkheads	1 X LONGITUDINAL BULKHEAD 3 X TRANSVERSE BULKHEAD
Tank compartment	8 x BALLASTABLE WATER TIGHT TANK
Lifting Eye Lug	4 each SWL 200T Lifting Eye Plate
Tow Bracket	2 Smit Type Tow Bracket SWL 25T @Forward
Bollard	6 set Double Bitt Bollard @ Port & Starboard
Anchor winch	1 x 5T Manual Anchor winch c/w anchor
Navigation Light	Port , starboard & Stern

OPTIONAL INSTALLATIONS

Stanchion	12 each 6ft x 10" I-Beam stanchion @P&S
-----------	---





Landing Platform Ballastable Barge 80ft x 25ft x 8ft Deck Strength 5T/M2 Multi-Function Load Test Eye Plate

GENERAL DETAIL PARTICULARS

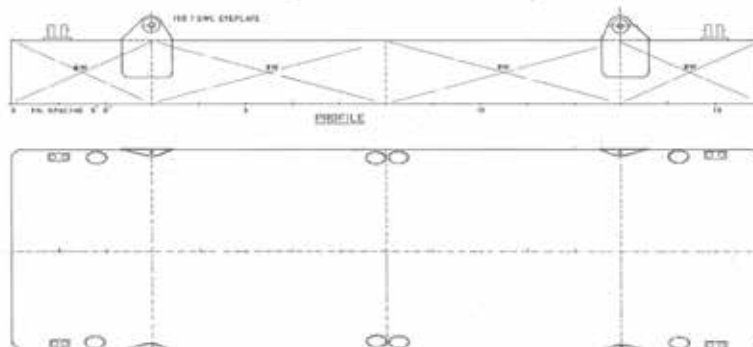
Classification	Germanischer Lloyd	REG NO.	1 1 7 4 5 7
FLAG	SINGAPORE	Class Notation	+100A5 Pontoon
Official No	3 9 8 3 6 4	Harbor Craft No.	S R 3 3 1 4 F
GRT / NRT	1 1 4 / 35	Year Built	2 0 1 3
Length Overall	2 3 . 4 1 M	Breadth Moulded	7.62 M
Depth Moulded	2.44 M	Moulded Draught	1.45 M
DWT *Design draft	203 T	Designed Draft	1.45 M*
Light ship Weight	73.260 T	Mean Draft	0.386 M
Clear Deck Area	175 M2	Deck Strength	5 T / M 2

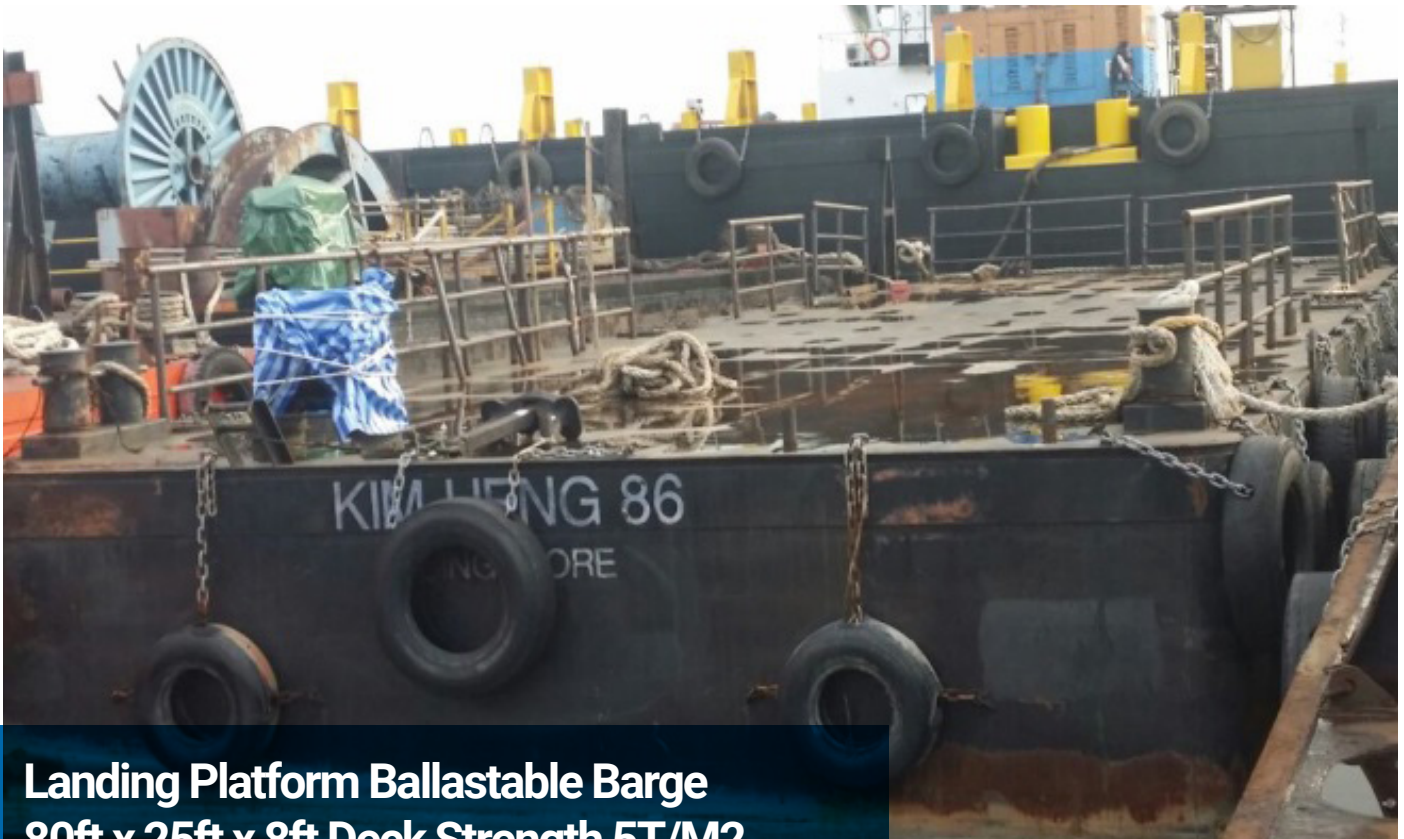
FEATURES

Bulkheads	1 x LONGITUDINAL BULKHEAD 3 x TRANSVERSE BULKHEAD
Tank compartment	8 x BALLASTABLE WATER TIGHT TANK
Lifting Eye Lug	4 each SWL 150te Lifting Eye Plate for SWL150T shackle
Tow Bracket	2 Smit Type Tow Bracket SWL 15T @Forward
Bollard	4 set Double Bitt Bollard @Fore PS & Aft PS
Anchor winch	1 x 5T Manual Anchor winch c/w anchor
Navigation Light	Port , Starboard & Stern

OPTIONAL INSTALLATIONS

Safety Hand Rail	Safety Hand Rails Monkey Swing
------------------	--------------------------------





Landing Platform Ballastable Barge 80ft x 25ft x 8ft Deck Strength 5T/M2 Multi-Function Load Test Eye Plate

GENERAL DETAIL PARTICULARS

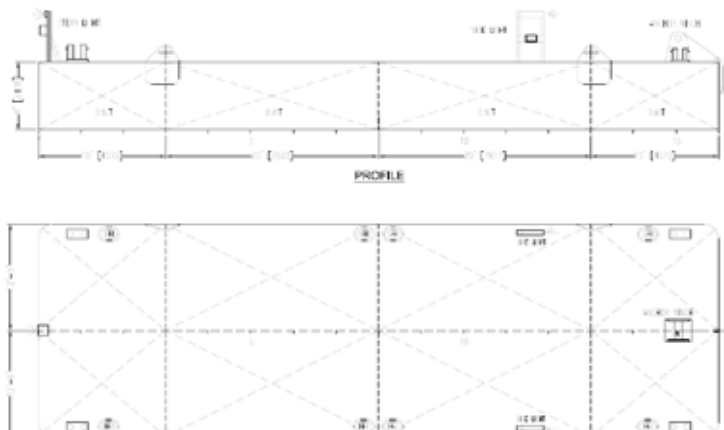
Classification	Germanischer Lloyd	REG NO.	117459
FLAG	SINGAPORE	Class Notation	+100A5 Pontoon
Official No	3 9 8 3 6 6	Harbor Craft No.	S C 4 6 2 9 B
GRT / NRT	1 1 4 / 35	Year Built	2 0 1 3
Length Overall	2 3 . 4 1 M	Breadth Moulded	7.62 M
Depth Moulded	2.44 M	Moulded Draught	1.45 M
DWT *Design draft	203 T	Designed Draft	1.45 M*
Light ship Weight	73.260 T	Mean Draft	0.386 M
Clear Deck Area	175 M2	Deck Strength	5 T / M 2

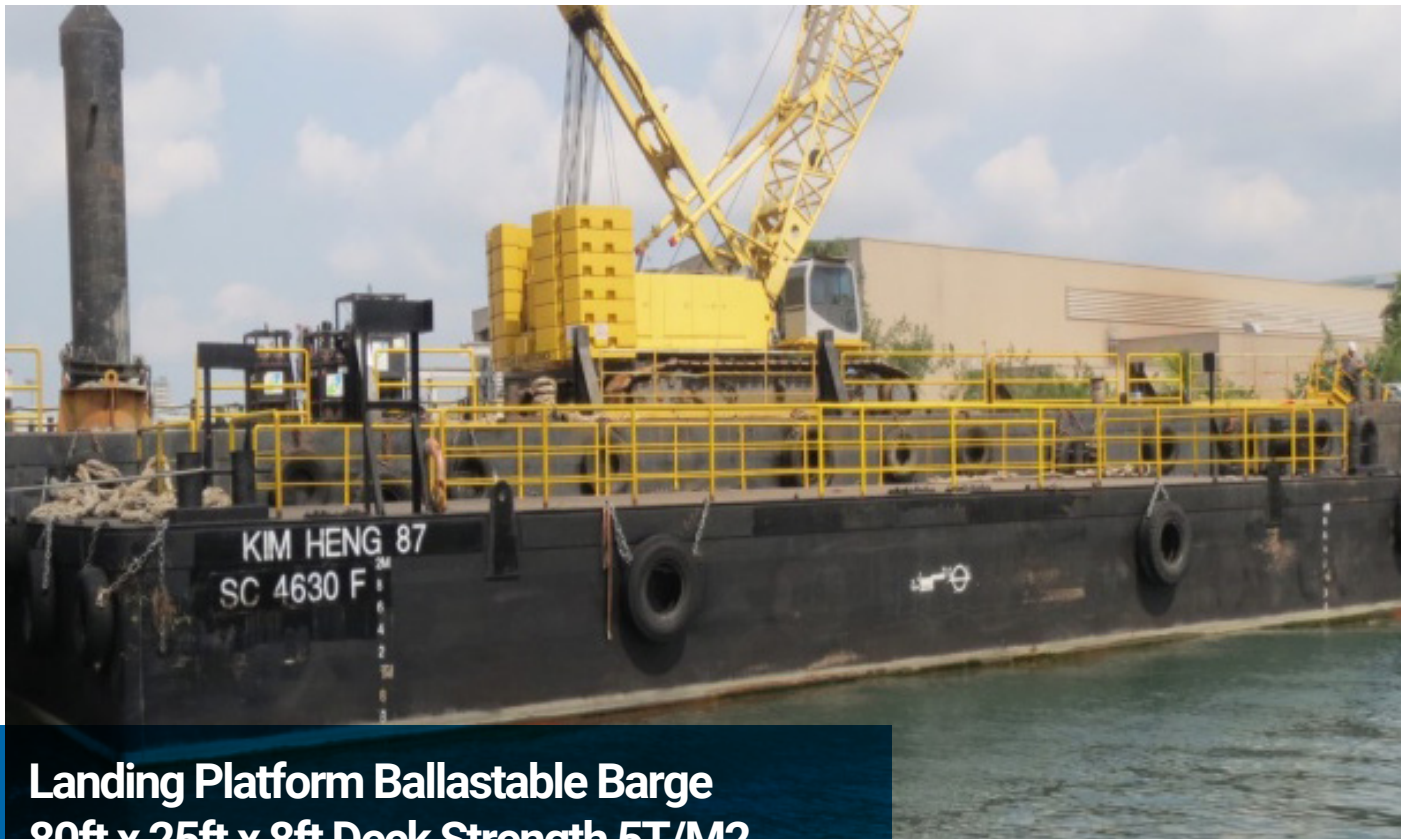
FEATURES

Bulkheads	1 x LONGITUDINAL BULKHEAD 3 x TRANSVERSE BULKHEAD
Tank compartment	8 x BALLASTABLE WATER TIGHT TANK
Lifting Eye Lug	4 each SWL 150te Lifting Eye Plate for SWL150T shackle
Tow Bracket	2 Smit Type Tow Bracket SWL 15T @Forward
Bollard	4 set Double Bitt Bollard @Fore PS & Aft PS
Anchor winch	1 x 5T Manual Anchor winch c/w anchor

OPTIONAL INSTALLATIONS

Safety Hand Rail	Safety Hand Rails Monkey Swing
------------------	--------------------------------





Landing Platform Ballastable Barge 80ft x 25ft x 8ft Deck Strength 5T/M2 Multi-Function Load Test Eye Plate

GENERAL DETAIL PARTICULARS

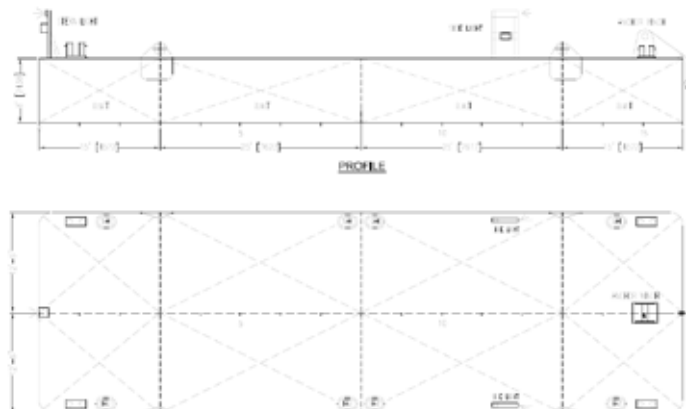
Classification	RINA	REG NO.	1 1 7 7 0 2
FLAG	SINGAPORE	Class Notation	+100A5 Pontoon
Official No	3 9 8 8 3 6	Harbor Craft No.	S C 4 6 3 0 F
GRT / NRT	1 1 4 / 35	Year Built	2 0 1 3
Length Overall	2 3 . 4 1 M	Breadth Moulded	7.62 M
Depth Moulded	2.44 M	Moulded Draught	1.45 M
DWT *Design draft	202 T	Designed Draft	1.45 M*
Light ship Weight	72.9 T	Mean Draft	0.386 M
Clear Deck Area	180 M2	Deck Strength	5 T / M 2

FEATURES

Bulkheads	1 x LONGITUDINAL BULKHEAD 3 x TRANSVERSE BULKHEAD
Tank compartment	8 x BALLASTABLE WATER TIGHT TANK
Lifting Eye Lug	4 each SWL 150te Lifting Eye Plate for SWL150T shackle
Tow Bracket	2 Smit Type Tow Bracket SWL 15T @Forward
Bollard	4 set Double Bitt Bollard @Fore PS & Aft PS
Anchor winch	1 x 5T Manual Anchor winch c/w anchor
Navigation Light	Port , Starboard & Stern

OPTIONAL INSTALLATIONS

Safety Hand Rail	Safety Hand Rails Monkey Swing
------------------	--------------------------------





CONTACT DETAILS

☎ 65 6777 9990 📠 +65 6778 9990 ✉ enquiry@kimheng.com.sg 🌐 www.kimheng.com.sg

Yard: 9 Pandan Crescent Singapore 128465

Office: 48 Penjuru Road Singapore 609152

Last update Date: 15/11/2024